



TRAIL TENDERIZER TRACKSETTER

Instruction Manual



You will find the most up to date version of this document on our website
www.tiddtech.com/resource-center/tidd-tech-manuals

1100 Roundhouse Road • Spooner, WI 54801

Phone: 1-715-635-3220

Website: www.tiddtech.com • Email: ttech@tiddtech.com

Packing List

Trail Tenderizer Tracksetter

- (1) Tracksetter Main Frame** assembled with
- (1) Base bolted to frame with (10) 5/16" BHCS + LN + FW
- (2) H-Links bolted to frame (1) 3/8" HB + LN
- (2) Clip Pins inserted in H-Links
- (2) Track Cutter Units (TCU) (4) 5/16" x 1" CB + LN
- (2) Track Shoes (lined up with TCU's) (2) 3/8" x 3/4" HB through frame (4) 3/8" x 3/4" + FW
- (1) Rubber Bumper (3) 1/4" x 3/4" BHCS + LN + FW
- (2) Side Plates (4) 5/16" x 3/4 BHCS + LN
- (1) Tidd Tech label on rear of frame

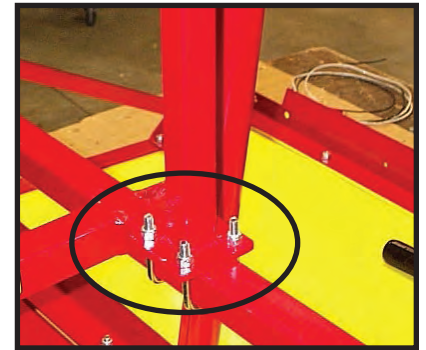
- (1) Lift Lever Post**
- (1) Lift Arm Kit**
- (1) Manual 012271-02**

ASSEMBLY

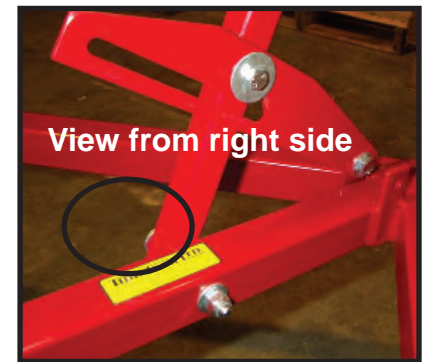
Congratulations on your purchase of a Tracksetter for use with your Tidd Tech Trail Tenderizer. If you have not already done so, please assemble your Trail Tenderizer before proceeding with Tracksetter assembly. Once your Trail Tenderizer is fully assembled, you may proceed with the following steps: Open the carton containing the Track Setter and Lift Lever.

STEP 1. Attach the upright Lift Lever Post on the drawbar cross piece with plate and bolts provided. This post is designed to be moved, if necessary, to accommodate different tracksetter positions. If it is placed in the center, it will work fine with a tracksetter placed in the center, or one position either side of center. If you are placing a tracksetter on the extreme outside position of a 6' Trail Tenderizer,

you will need to move the Lift Lever Post to that side. If you find that you are constantly moving the post from side to side, please give us a call and we can sell you an extra lift lever kit.



STEP 2. Bolt the Lever Arm to the square tube behind the hitch point (3/8" x 3-1/2" hex bolt for one lift lever, 4-1/2" hex bolt for double lift levers on the six foot model – we supply both bolts, you will select only one. Bolt the slotted hook plate to the upright tab on the front point of the drawbar (5/16" x 1"). Note: If you are installing double lift levers, one will

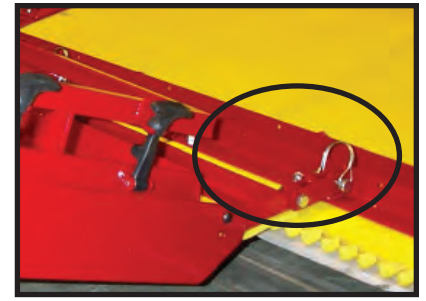


look like the pictures, and the other will assemble as a mirror image.

STEP 3. Bolt the link arms on the front tabs using 3/8" x 1-1/4" hex bolts and locknuts (do not tighten to the point that you deform the link). Attach the track setter to the rear edge of the compactor comb using the clip pins provided.

STEP 4. Clip the ring or shackle (which ever is supplied with your machine) at the end of the cable to the handle of the track setter. You may need to adjust the length of the cable by loosening one of the cable clamps. Adjust the cable length so there is a bit of cable slack in the down position and the track setter lifts 6-8 inches off the snow in the up position. Note: If you find that the tracks seem to disappear when you crest a hill, you need to add just a little more slack in the cable. The TrackSetter needs to pivot slightly past the plane of the compactor to follow the terrain.

Your Tracksetter is now ready for use. You may now refer back to your Trail Tenderizer Manual for operating instructions.



LIMITED WARRANTY FOR TIDD TECH PRODUCTS BY TIDD TECH

Products from Tidd Tech carry a one year warranty. If the equipment fails due to a defect in workmanship within one year from the date of purchase, Tidd Tech will repair or replace the part free of charge.

This warranty is not transferable and does not cover damage resulting from anything other than defects in workmanship. This warranty does not cover damage caused by unreasonable use, nor replacement of non-defective parts that may wear and need to be replaced within the warranty period. Batteries and other power sources are not covered by this warranty.

For warranty service you must, at your own expense, arrange to deliver or ship the product or part(s) for warranty repairs to Tidd Tech at the address below.

This limited warranty is in lieu of all other express warranties. Tidd Tech shall not be liable for any special, incidental or consequential damages.

This warranty gives you specific legal rights, and you may also have other rights which vary from state to state.

TIDD TECH

1100 Roundhouse Road • Spooner, WI 54801

Phone: 1-715-635-3220

Email: ttech@tiddtech.com

www.tiddtech.com